

*Jostens*<sup>®</sup>

**NORWICH UNIVERSITY CORPS OF CADETS**

# CLASS RING

2021 CATALOG



**NORWICH**  
**UNIVERSITY**<sup>™</sup>



**WEAR IT WITH PRIDE!**

# NORWICH SIDE

## 1819

Norwich was the first private military college in the country, established in 1819. Our founder, Captain Alden Partridge, understood that structured military lifestyle combined with rigorous academics would benefit those pursuing careers in both the military world and the private sector.

## NUCC Scroll

Flowing on either side of the shield, the scroll distinguishes those who wear the ring as members of the Norwich University Corps of Cadets.

## Norwich Shield

Depicts a cannon and an engineer's transit in the foreground of a mountain range, with the rays of the morning sun rising above it. The cannon represents the military heritage of the institution; an engineer's transit represents our academic mission. Finally, the rising sun over the Green Mountains represents the light of knowledge flowering on "The Hill". The numerals 1819 hallmark the founding date of the University.

## Eagle

Surmounted on the Norwich shield, symbolic of strength and courage in its depiction of both our school and as our national symbol.

## Honor Scroll

Superimposed upon the talons of the eagle, it stands for the fundamental attributes of character. Honor is a virtue which impels loyalty and courage, truthfulness and self respect, justice and generosity. A cadet's honor is never in question if he or she is true in thought, word, and deed.

## Cavalry Sabers

Flanking either side of the shield, they represent our kinship with Vermont's first cavalry. Today, cadet officers wear sabers in lieu of carrying rifles.

## "I Will Try"

It was said to have been used as a rallying cry by a former president of the University, Truman Bishop Ransom, before his death as he charged a hill at the Battle of Chapultepec during the Mexican War. It conveys the spirit of the University and has been adopted as our motto: "I will try".



1

## NORWICH UNIVERSITY RING ORDERING

### RING PREMIERE

TUESDAY, OCTOBER 15, 2019

2000 PLUMLEY ARMORY

### CLASS BRIEF

TUESDAY, NOVEMBER 5, 2019

WHITE CHAPEL

### RING ORDER TIME & DATES

WEDNESDAY, NOVEMBER 6, 2019 1000 - 1800 KREITZBERG LIBRARY MULTIPURPOSE ROOM

THURSDAY, NOVEMBER 7, 2019 1000 - 1600 KREITZBERG LIBRARY MULTIPURPOSE ROOM



NORWICH  
UNIVERSITY™

### RING TRY-ONS

THURSDAY, JAN 30, 2020 1000 - 1730

KREITZBERG LIBRARY MULTIPURPOSE ROOM



# 2021 NORWICH CREST SYMBOLISM

## 1. FIVE RAYS

The five rays represent the five branches of the military: Army, Marine Corps, Navy, Air Force, and Coast Guard. Together we stand in strength and unity to protect our great country. No matter where we serve on land, air, or sea, we can always rely on our brothers and sisters in arms.

## 2. ECLIPSE

On Monday, 21 August 2017, we experienced a solar eclipse during rook week. A symbol of change, the eclipse signifies the transformative experience of Rookdom. In our lives, we may be challenged to embrace rapid change, but it is this change that will be our ultimate test as we become the best leaders in the civilian or military professions.

## 3. THE MOUNTAINS

The end of Rookdom and recognition is the pinnacle of our first year in the Corps. For many of us, recognition justifies the hardships that we endured for eighteen weeks. It also signifies the weight of responsibility that we carry on our shoulders as leaders, not only on the Hill as cadets, but around the world as alumni. We are Norwich men and women; no matter the stress, doubt, and adversity we face, we know the rook and cadet experiences have prepared us to succeed.

## 4. BALD EAGLE

The bald eagle is one of the most patriotic symbols of our nation. It will always have its wings spread wide with strength, perseverance, and resilience.

## 5. QUOTE

"If not us, then who?" is a testament of our classes' character, drive, and heart. Whether you choose the path of the military or civilian world, you will look to this statement and strive to live by it every day.

## 6. AMERICAN FLAG

The American flag, present at every formation, is a symbol of our Guiding Value of "service to nation and others before self." Our unwavering resolve to preserve Norwich's tradition of educating citizen-soldiers is why we stand apart from other higher education institutions. America needs more Norwich graduates who are well qualified, ethical, and empathic to lead in all professions. At Norwich, we serve something bigger than ourselves. We must never forget our mission and values.

## FLAG AT HALF STAFF

On 1 October 2017, the largest mass shooting in U.S history tragically took place in Las Vegas, Nevada while we were aspiring cadets. At Norwich, we honored those who lost their lives by lowering the flag to half-staff and performing a remembrance ceremony on the Upper Parade Ground. We stood as a Corps of Cadets in dark silence as the solemn notes of Echo Taps reverberated across the valley. This tragedy would not be the only time we would hear the mournful tone of Echo Taps. We would stand and salute to the fire of 21 guns and Echo Taps on Veterans Day in reverence to our brave veterans who gave the ultimate sacrifice in defense of the United States of America, and during Alumni Weekend to honor our deceased alumni whose "true measure of success was service rendered-to God, to Country, and to Mankind."

## 7. HOWITZER

The rolling thunder of howitzer fire echoes daily off the hills surrounding the valley in which Norwich University resides. The howitzer fire marks the beginning and end of each significant event that we, as a class, will experience together. In coming years, we will recall the blasts that mark the start of rook arrival day 20 August 2017, and those to follow through junior ring ceremony, concluding with commencement and commissioning ceremonies.

## 8. SHIELD

Shields are a form of defense; their very nature is to protect. As future leaders in the United States military and throughout the world, we are called to safeguard the rights and well-being of every person. The NU on the shield signifies our respect of the past. As cadets, we learn and value the legacies of the men and women who came before us. These legacies are the bedrock of our beloved institution and form us into who we are today as Norwich men and women.

## 9. IVY

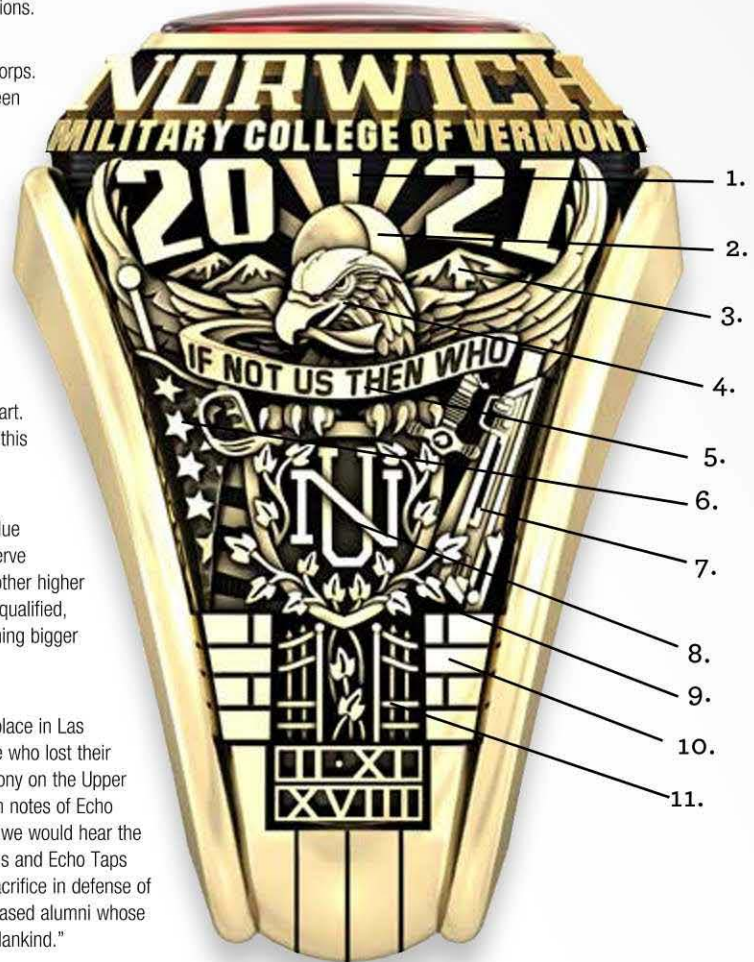
The ivy symbolizes the 18 weeks of rook training that transformed our class from recruits to cadets. The leaves ever so slightly intertwined with the Norwich shield represent the binding of family and the ability to grow through toil no matter the environment. The interconnectedness of the leaves is what will keep our class bound together for generations to come.

## 10. BRICKS

The bricks signify our foundation built over time, first as rooks, then as proud Norwich cadets. While Rookdom was tough, being a leader of exemplary character with integrity and moral courage is a feat that few achieve.

## 11. GOODYEAR GATE

Gates control access to enter the domain they protect. Expressing tearful goodbyes to our loved ones, we exited the door of Kreitzberg Arena to take our first steps on the journey of Rookdom. We passed through the opened Goodyear Gate to the Upper Parade Ground. Most will be welcomed into the Corps of Cadets and stand on the shoulders of those who entered the gates centuries earlier. Others will lack the grit to make it to the finish line.





# DESIGN YOUR RING

## RING WEIGHT

Ring weight is described in pennyweight (DWT).

The largest ring available is 44 DWT.

- 44 DWT, 40 DWT, 36 DWT, 26 DWT, 22 DWT

The price of the standard ring is quoted using four criteria: It is made of 10 karat gold at current market price. It features a 12 x 10 mm synthetic faceted garnet stone. The ring is 26 dwt with a closed back – exclusive of the stone. Your ring is engraved inside at no cost. The University requires, at a minimum, your full name or first initial and your last name.



## METAL QUALITY

- 18K Yellow or White Gold • 14K Yellow or White Gold
- 10K Yellow or White Gold • Lustrium

14K gold is the jeweler's standard in this country and therefore is the most popular choice for gold rings. For those cadets who desire more gold in their ring, 18K gold is available. For those wishing a more economical gold ring, 10K gold is available. Your combat ring will be produced in Lustrium, a non-precious alloy made of nickel, chromium and beryllium.

For Rose and Green Gold - add \$ .

## 2021 NORWICH PRICING INFO

STYLE	10K GOLD	14K GOLD	18K GOLD
44 DWT	\$	\$	\$
40 DWT	\$	\$	\$
36 DWT	\$	\$	\$
26 DWT	\$	\$	\$
22 DWT	\$	\$	\$

FIELD RINGS: \$ with the purchase of a gold ring.

3



DARK ANTIQUE

MEDIUM ANTIQUE

SATIN

## RING FINISHES

You will receive the traditional Dark Antique finish, which enhances the detail and design of your ring. Jostens also offers a Medium Antique finish and a Satin (natural) finish. Samples of available finishes will be on display when you place your order.

The basic ring price includes a medium or dark finish.

Satin finish is available for an additional \$25.00.

# GOLD TOPS

These beautiful and elegant gold tops are available in a variety of designs. Some tops are available without a stone and the add-on price to any ring is \$75.00. Any top with a stone set in will be priced accordingly based on the size of the stone and the type of stone. Sizes vary by the gold top.

The size of the center stone may vary due to ring style.



	LAUREL	ECLIPSE	ROSETTE	STAR	GOLDSTONE
<b>44, 40, 36 DWT</b>	3/4 carat	1/2 carat	1/3 carat	3/4 carat	1 carat
<b>26, 22 DWT</b>	3/4 carat	1/2 carat	1/3 carat	3/4 carat	1 carat

# TUBE SETS

A diamond or genuine stone can be added to your smooth top synthetic stone by preparing the stone to receive a square tube set.

Maximum sizes of stones that can be tube set into synthetic stones are:

### SQUARE TUBE SET

<b>44, 40, 36 DWT:</b>	1/2 carat	<b>26, 22 DWT:</b>	1/2 carat
------------------------	-----------	--------------------	-----------



## TUBE SET & GOLD STONE PRICING

CT. SIZE	DIAMOND (JG-01)	DIAMOND (JG-03)	GENUINE RUBY	GENUINE EMERALD	GENUINE BLUE SAPPHIRE	CUBIC ZIRCONIA	SYNTHETIC STONES	BLUE CORNFLOWER STAR SAPPHIRE	GENUINE BLACK STAR SAPPHIRE	OPAL
1	\$	\$	\$	\$	\$	\$	\$	-	-	-
3/4	\$	\$	\$	\$	\$	\$	\$	-	-	-
1/2	\$	\$	\$	\$	\$	\$	\$	-	\$	-
1/3	\$	\$	\$	\$	\$	\$	\$	-	\$	-
1/4	\$	\$	\$	\$	\$	\$	\$	\$	\$	-
1/5	\$	\$	\$	\$	\$	\$	\$	-	-	-
1/7	\$	\$	\$	\$	\$	\$	\$	-	-	-
1/10	\$	\$	\$	\$	\$	\$	\$	-	-	-
1/20	\$	\$	\$	\$	\$	\$	\$	-	-	-

# GENUINE BEZEL DIVIDERS

We offer the option of upgrading your gold ring with Diamond or Cubic Zirconia stone dividers. These stones would replace the standard Alpha and Omega dividers. See listing below for pricing. These prices include 2 stones.

STYLE	BEZEL STONES	DIAMONDS	CUBIC ZIRCONIA
<b>44 DWT</b>	2-5 pts	\$	\$
<b>40 DWT</b>	2-5 pts	\$	\$
<b>36 DWT</b>	2-5 pts	\$	\$
<b>26 DWT</b>	2-3 pts	\$	\$
<b>22 DWT</b>	2-3 pts	\$	\$





# JUMBO REPLICA RING/PAPERWEIGHT & WALNUT RING BOX

No desk is completed without this enlarged replica of the Norwich University 2021 class ring. One side of the ring depicts the Norwich crest while the other side proudly displays the Norwich 2021 class crest. The top of the ring has Norwich University spelled out around the bezel. Approximate size is 2" x 2 1/2".



Your Norwich rings will be delivered to you in a custom box. The cover of the ring box is engraved with the Norwich seal and an engraved nameplate is attached.



The cost is \$ and includes the jumbo ring and walnut stand.

## STONES & CUTS

The standard official ring includes your choice of a smooth or faceted synthetic stone, or black onyx stone, medium or dark antique finish, one line of engraving and a solid closed back. Jostens synthetic stones are "ideal cut" to maximize the dazzle and brilliance of the stone. As light enters the stone, it freely refracts from facet to facet, for a radiant display of color. In place of the stones included in the basic ring, you may select an optional stone. The stone choices and additional charges are:

SYNTHETIC STONE PRICING :	ALL STYLES
Sunburst Synthetic Stone	\$
India Cut Synthetic Stone	\$
Encrusted Synthetic Stone	\$
Encrusted Black Onyx	\$
Protected Emblem-Synthetic Stone	\$



FACET



SMOOTH



CLARET RED



BLUE CORNFLOWER

### SYNTHETIC STAR SAPPHIRE

Next to the diamond this distinctive stone is the hardest and most chip resistant. The star sapphire displays a clear, sharp polaris.

SYNTHETIC STAR SAPPHIRE PRICING	
44, 40, 36, 26, 22 DWT	\$



# EXCLUSIVE GEMSTONES

## AMETHYST

Light, Medium, & Dark purple

Hardness: 7

Appearance: Transparent light pinkish purple to a dark reddish or bluish purple

Characteristics: Color zoning, fingerprints, and crystals. Amethyst, with its rich purple color, symbolizes royalty and aristocracy. Since it is plentiful in nature, it represents an incredible value for those who appreciate its elegant color.



### AMETHYST PRICING: LIGHT MEDIUM DARK

Stone Size 13x11  
44, 40, 36 DWT

Stone Size 12x10  
26, 22 DWT

## TANZANITE

Color Offering: Blue violet

Appearance: Light violet

Hardness: 6 1/2 - 7

Characteristics: Multifaceted prisms

Named for the East African state of Tanzania, the color varies from ultramarine to sapphire blue and appears violet.



### TANZANITE PRICING:

Stone Size 13x11 N/A  
44, 40, 36 DWT

Stone Size 12x10  
26, 22 DWT

## GARNET

Light, Medium, and Dark

Appearance: Light to dark reddish orange to purplish red

Hardness: 7 - 7 1/2

Characteristics: Coarse needle-like inclusion, included crystal of low relief

Garnet is available in a stunning array of colors and price ranges to fit anyone's taste.



### GARNET PRICING: FAR EAST DARK MOZAMBIQUE MEDIUM RHODALITE LIGHT

Stone Size 13x11  
44, 40, 36 DWT

Stone Size 12x10  
26, 22 DWT

## BLUE TOPAZ

Light (Sky), Medium (Swiss), and Dark

Appearance: Transparent light to medium blue

Hardness: 8

Characteristics: 2-phase and 3-phase inclusions

This popular blue gem symbolizes both the sky and sea. It is an affordable, fashionable stone, sure to please any taste.



### BLUE TOPAZ PRICING: LIGHT MEDIUM DARK

Stone Size 13x11  
44, 40, 36 DWT

Stone Size 12x10  
26, 22 DWT

## AQUAMARINE

Light, Medium & Dark

Hardness: 7 1/2 - 8

Appearance: Light to medium blue to bluish-green

Characteristics: Liquid-filled inclusions, fingerprints, hollow or gas filled tubes

Aquamarine has long symbolized the sea. It remains the favorite of those who appreciate the rarity of this spectacular blue gemstone.



### AQUAMARINE PRICING: LIGHT MEDIUM DARK

Stone Size 13x11  
44, 40, 36 DWT

Stone Size 12x10  
26, 22 DWT

## GENUINE BLUE SAPPHIRE

Light to dark violet to greenish blue

Hardness: 9

Characteristics: Fine needles-like rutile "silk", fingerprint inclusions, hexagonal growth lines, and color zones.

Sapphire is a regal gem and was worn by kings as a powerful defense from harm.

This favorite dark blue hue combined with the durability of sapphire makes a gemstone that will endure for generations to come.



### BLUE SAPPHIRE PRICING:

Stone Size 13x11  
44, 40, 36 DWT

Stone Size 12x10  
26, 22 DWT



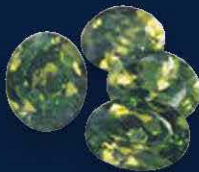
## PERIDOT

Appearance: Light to dark yellowish to brownish green

Hardness: 6 1/2

Characteristics: Disk-like liquid and gas inclusions, "lily pads", dark crystals

Peridot's golden green color represents the sun and has been prized for thousands of years.



### PERIDOT PRICING:

Stone Size 13x11  
44, 40, 36 DWT

Stone Size 12x10  
26, 22 DWT

## GREEN TOURMALINE

Color Offering: Green

Appearance: Light to dark yellowish green to bluish green

Hardness: 7 - 7 1/2

Characteristics: Frequently contains thread-like inclusions

Available and affordable, tourmaline is ideally suited to virtually anyone's taste.



### GREEN TOURMALINE PRICING:

Stone Size 13x11  
44, 40, 36 DWT

Stone Size 12x10  
26, 22 DWT

## IOLITE

Appearance: Color varies from sapphire blue to blue violet to yellowish gray to light blue as the light angle changes

Hardness: 7 - 7 1/2

Characteristics: Cordierite (mineralogy) - gem variety iolite is a magnesium iron aluminum cyclosilicate.

The name iolite comes from the Greek word for violet. It has also been called "water-sapphire" and "vikings' compass", because of its reputed ability to determine the direction of the sun on overcast days.



### IOLITE PRICING:

Stone Size 13x11  
44, 40, 36 DWT

Stone Size 12x10  
26, 22 DWT

## CITRINE TOPAZ

Light, and Dark

Appearance: Light yellow to golden brown

Hardness: 7

Characteristics: Color zoning, fingerprints and crystals

The yellow hues of citrine are striking and symbolic of the sun, health and vitality. Since it is plentiful in nature, it is an incredible value for the person who appreciates its color.



### CITRINE TOPAZ PRICING:

LIGHT    DARK

Stone Size 13x11  
44, 40, 36 DWT

Stone Size 12x10  
26, 22 DWT

## PINK TOURMALINE

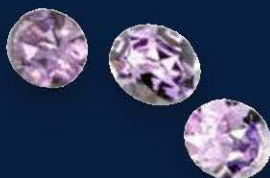
Color Offering: Pink

Appearance: Light to Dark Pink

Hardness: 7 - 7 1/2

Characteristics: Frequently contains thread like inclusions.

Available and affordable, tourmaline is ideally suited to virtually anyone's taste.



### PINK TOURMALINE PRICING:

Stone Size 13x11  
44, 40, 36 DWT

Stone Size 12x10  
26, 22 DWT

## OPAL

Color Offering: White

Appearance: Transparent to opaque stones with "play of color"

Hardness: 5 - 6 1/2

Mysterious opals contain the wonders of the skies - sparkling rainbows, fireworks and lightning - shifting and moving in their depths.



### OPAL PRICING:

Stone Size 13x11  
44, 40, 36 DWT

Stone Size 12x10  
26, 22 DWT



## METEORITE

Color Offering: Iron w/ Widmanstatten Patterns

Appearance: Varies from stone to stone

Hardness: 9

Characteristics:

The Widmanstatten Patterns show us that this stone is "Extra Terrestrial" – from outer space. These stones come from the Gibeon meteorite that is estimated to be 4 billion years old. This meteorite fell to earth over 10,000 years ago in Africa. It is made up of 91.8% Iron and 7.7% Nickel and also contains small amounts of Cobalt, Phosphorus, Iridium, Gallium, and Germanium. Polished with a dilute nitric acid to bring out the Widmanstatten Patterns that are unique in each meteorite.



### METEORITE PRICING:

Stone Size 13x11

44, 40, 36 DWT

Stone Size 12x10

26, 22 DWT

## DIAMOND

Color: The most desirable diamonds are colorless.

A totally colorless diamond allows light to pass through it and be dispersed as rainbows of color.



D	E	F	G	H	I	J	K	L	M	N	O	P	Q	R	S	T	U	V	W	X	Y	Z
COLORLESS			NEAR COLORLESS			FAINT			VERY LIGHT YELLOW			LIGHT YELLOW										

## GREEN QUARTZ

Color Offering: Light Green

Appearance: Light "Smokey" Green

Hardness: 7

Characteristics: Green quartz (Prasiolite) is a rare Brazilian stone that has similar characteristics to Amethyst and Citrine. It is often incorrectly referred to as green amethyst.



### GREEN QUARTZ PRICING:

Stone Size 13x11

44, 40, 36 DWT

Stone Size 12x10

26, 22 DWT

### JG 01 GRADE

COLOR WHITE H-I  
CLARITY VS 2 GIA CLASSIFICATION  
NO BLACK INCLUSIONS  
NO CHIPS OR FEATHERS  
OPEN TO SURFACE  
NO POLISH LINES  
CLEAR - NO WATERY,  
GRAINY MATERIAL  
PROPORTION VERY GOOD OR BETTER  
NO FISHEYES OR DARK CENTERS

### JG 03 GRADE

COLOR WHITE IK  
CLARITY SI GIA CLASSIFICATION  
NO BLACK INCLUSIONS  
NO CHIPS OR FEATHERS  
OPEN TO SURFACE  
VERY MINOR POLISH LINES  
CLEAR - NO WATERY,  
GRAINY MATERIAL  
PROPORTION GOOD OR BETTER  
NO FISHEYES OR DARK CENTERS

## ADDITIONAL OPTIONS

### ENGRAVING

The amount of engraving in your ring is limited by the space available. Your ring may have up to 3 lines of engraving. Each line can have up to 34 characters including spaces. The more characters that you have in your engraving the smaller the engraving will be inside your ring. In script or block style.

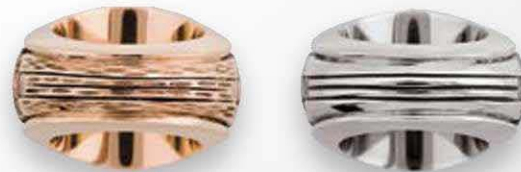
- First line of engraving is free.
- A second and third line of engraving is typically used to include a motto or phrase to further personalize your ring. There is an additional charge of \$ for each additional line.



### SCULPTURED PALMSIDE

With this elegant touch of extra craftsmanship, a textured pattern is added by hand to the palmside of your ring. In addition to enhancing the custom beauty of your ring, this feature will camouflage nicks and scratches that result from normal wear and will help to retain the palmside beauty of your ring.

The additional cost for a sculptured palmside is \$ .



SCULPTURED

SMOOTH

# SEMI - PRECIOUS STONES

## GRANITE

Hardness: 5 1/2- Jostens has cut and polished granite, provided by the Academy, into stones for your class ring.

## A. BROWN TIGER EYE

Appearance: A stone with fibrous structure  
Hardness: 7 - Characteristics: Irregular fibrous structure

## B. BLOODSTONE

Appearance: Dark green with red to brown spots  
Hardness: 6 1/2 - 7 - Characteristics: Semi-transparent to opaque

## C. HEMATITE

Appearance: Silver black with metallic luster  
Hardness: 6 1/2 - Characteristics: Semi-transparent to opaque

## D. JADE

Appearance: Translucent to opaque  
Hardness: 6 - 6 1/2 - Characteristics: Dark inclusions and streaks

## E. BLUE/GREEN EARTH STONE

Appearance: White/green/blue Hardness: 6 1/2 - 7  
Characteristics: Agate material which is dyed

## F. LAPIS LAZULI

Appearance: A blue to violet blue stone containing calcite and pyrite crystals - Hardness: 5 - 6 - Characteristics: Pyrite (fools gold) spotted sporadically and Calcite (white) streaked

## G. TURQUOISE

Appearance: Light to medium blue to greenish blue Hardness: 5 - 6  
Characteristics: Often is mottled, splotched, with veins of matrix

## H. MOTHER OF PEARL

Appearance: White - Hardness: 2.5 - 4 1/2  
Characteristics: Pearly luster with iridescent colors



9

PRICING: GRANITE TIGER EYE BLOODSTONE HEMATITE JADE EARTH STONE LAPIS LAZULI TURQUOISE MOTHER OF PEARL

Stone Size: 13x11  
44, 40, 36 DWT

Stone Size: 12x10  
26, 22 DWT

# RING BEZEL JEWELRY

The accessory jewelry shown here is crafted from the bezel of the class of 2021 ring. These custom pieces are available in 10k and 14k yellow or white gold with your choice of finish. You can also choose to have the design completed as a pendant, charm or tie tack. The complete selection of bezel enhancements are available including genuine stones and bezel dividers. Accessory jewelry is a great gift anytime but is especially appropriate for birthday and holiday gifts for parents, family, and special friends.

For Satin Natural Finish add \$ . For White Gold add \$ .

JEWELRY PRICING	10K	14K
TIE TACK	\$	\$
PENDANT W/CHAIN	\$	\$
CREST PIN	\$	\$
TIE BAR	\$	\$
BRACELET CHARM	\$	\$
CUFF LINKS	\$	\$





# NORWICH RING - TERMS

## RING SIZING

To properly size your finger, a ring sizer should fit snugly over the knuckle of the finger on which you will wear your ring. The ring is normally worn on the ring finger of either hand. Also, be aware that your left and right hand can vary in ring size. Full and half sizes are available.

A Jostens representative will be available to assist you at the time you place your order.

## CUSTOMER STONES

All customer supplied stones must be accompanied by a registered jeweler's appraisal form. The form must include the following information on it:

If the stone is a Diamond the following information must be included: Carat Size, Cut, Color and Clarity.

If the stone is a full stone (13 x 11, 12 x 10), the measurements need to be on the appraisal form in millimeters and they need to be to the specifications that are listed below. **No stones will be accepted that are not to these specifications.**

All appraisals must include a replacement price. If the stone is an heirloom stone we will need a replacement value. If the stone was purchased then we will need a copy of the sales receipt.

All stones must be loose and free from any mounting. Stones will not be accepted if they are still in a mounting.

Because of the extremely tight tolerances, personal stones under 10 points will not be accepted.

## MEASUREMENTS FOR CUSTOMER SUPPLIED STONES

All Customer stones must be to these exact measurements. There cannot be a variance as these stones have a stone setting edge. One exception is the depth of the stone which can be less but not more than the measurement listed.

FULL STONES		DEPTH OF THE STONE
44, 40 & 36 DWT RINGS	13 X 11 MM OVAL	3.5 MM DEPTH
28 DWT RING	12 X 10 MM OVAL	3.5 MM DEPTH

All stones will be inspected by Jostens manufacturing plant for final approval. This approval process can take up to 90 days from the time we receive your stone.

All stones must be presented along with the jeweler's appraisal when you place your ring order. Customer stones must be received within 30 days from the date you placed your ring order. If you lose your ring, your personal stone or stones are not covered under Jostens protection insurance. **Additional Charges incurred when setting a customer stone:** stone setting charge \$125.00. Stone set in a tube set, or a white gold top: add \$ to the setting charge for a total charge of \$ .

## PAYMENT INFORMATION

### OPTION 1: DEBIT OR CREDIT CARD PAYMENTS

In order to comply with Payment Card Industry (PCI) Standards, **Jostens will not be accepting any credit or debit card information at the time of ordering.** We have developed a secure and simple process that allows for flexibility and convenience. Please refer to the following guidelines for credit/debit card payments:

Upon placement of your order(s), you will be given a payment due date which will be located on the front of your order form. This date is when your final payment will be due to Jostens. By complying with this date you will insure that your items will ship with your Class.

**You have 30 days from the time that you place your order(s) to make any changes.** After the 30 days your order(s) will be entered into production at which time you will no longer be able to make any changes.

You will need to allow (5) weeks from the time you place your order(s), after the (5) weeks you will then be able to log onto: **Jostens.com/payments** to set up your personal account and begin making payments. Once you have set up this information you will begin receiving e-mail notices until your account is paid in full.

### OPTION 2: PAYMENT IN FULL

You can make full payment by CHECK or MONEY ORDER at the time of order. Make your check or money order payable to **JOSTENS**. Please note that for security purposes, cash will not be accepted.

## JOSTENS LIFETIME WARRANTY

Jostens has a lifetime warranty on all of its rings. That includes, but is not limited to, replacement of all stones, both genuine and synthetic, that are defective or broken, without charge. Also included in the lifetime warranty is resizing, polishing and refinishing the ring, without charge.

**IT IS IMPORTANT TO NOTE THAT IF A RING HAS HAD ANY REPAIR WORK PERFORMED OR ANY ALTERATIONS COMPLETED BY ANY JEWELER OR REPAIR**

**SERVICE OTHER THAN JOSTENS, THE LIFETIME WARRANTY WILL BE VOIDED.**

## SALES & SERVICE

### NORWICH CUSTOMER SERVICE CENTER

TOLL-FREE 1-800-603-0925

7:00AM - 5:00PM CENTRAL TIME

1900 HARTLE AVENUE  
OWATONNA, MN 55060

JOSTENS.COM/NUMCV

JOSTENS.COM/PAYMENTS - TO MAKE A PAYMENT

EMAIL: APS@JOSTENS.COM



*Jostens*<sup>®</sup>



**WEAR IT  
WITH PRIDE.**

**NORWICH CLASS RINGS**